

Talent Corner

Poem — Just Round The Corner

Whimsical yet musical
The world is for a wanderer
Stays neither at one place
Nor worried for fancies

Accumulating rather
Fragrant pansies
Just for cheers
And for laughs

So is fun, And is love
Round the corner
Yeah! my dear,

The Christmas is
Just round the corner.

Alka Sharma
Rehari Colony.

Poem — Artificial Intelligence Replacing Organic Literature

Sometimes, it's demotivating,
Aggravating, anyone can create, it's grating.

But sometimes, it's motivating,
Elevating, editing and errors eliminating.

People seek quality, it's true,
It's true, AI provides, not a crime we construe.

The value of hard work, organic's wane,
Organic's wane, robots' gain, human effort's strain.

AI selects from cyberspace vast,

Cyberspace vast, yet can't invent, a contrast.

AI plays with words in its show,
In its show, like father, like son, AI continues to grow.

Artificial Intelligence, a literature feature,
A literature feature, a human-made creature.

Sahaj Sabharwal

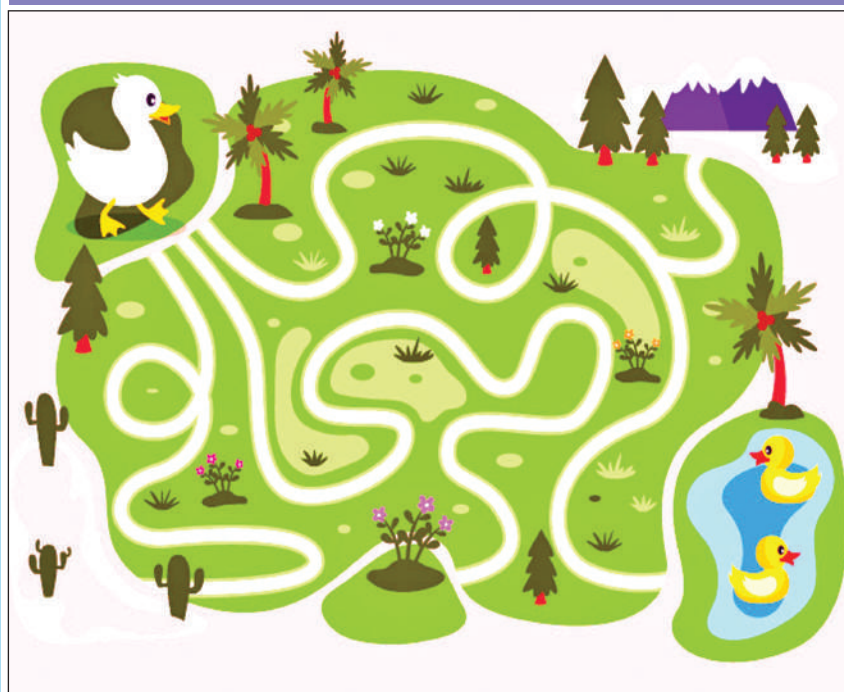
SUDOKU

	6	3					5	
				8			6	4
				4	1	7		
		7	3			5		
	8	1			2	3	6	
		5			7		8	2
				2		1	3	
8								

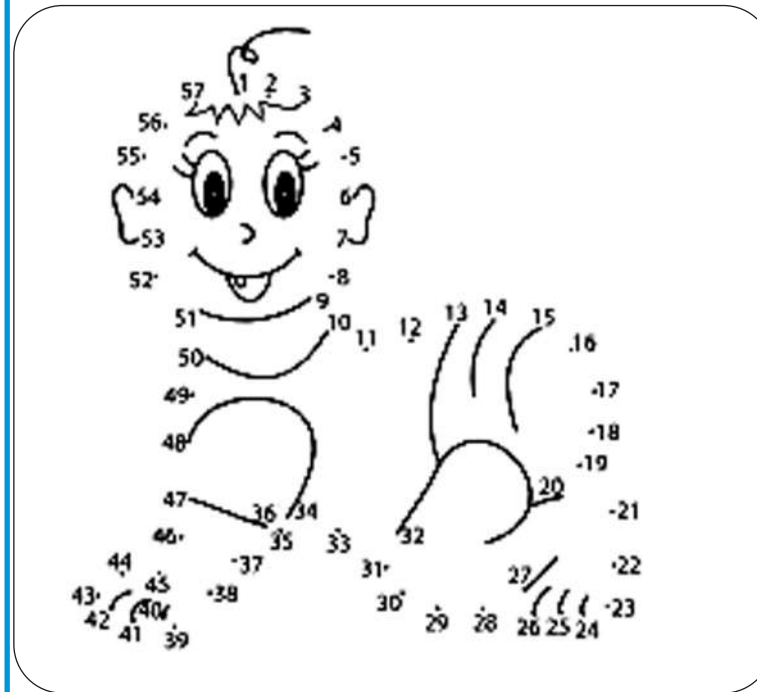
**SOLUTION
OF
LAST
WEEK
SUDOKU**

7	1	5	6	4	9	3	8	2
2	8	3	7	5	1	4	6	9
6	4	9	8	2	3	7	1	5
4	3	8	2	7	6	5	9	1
1	5	2	3	9	8	6	4	7
9	6	7	5	1	4	8	2	3
3	2	1	4	8	5	9	7	6
5	9	4	1	6	7	2	3	8
8	7	6	9	3	2	1	5	4

MAZE



COMPLETE THE PICTURE



CAREER AID

Entomology

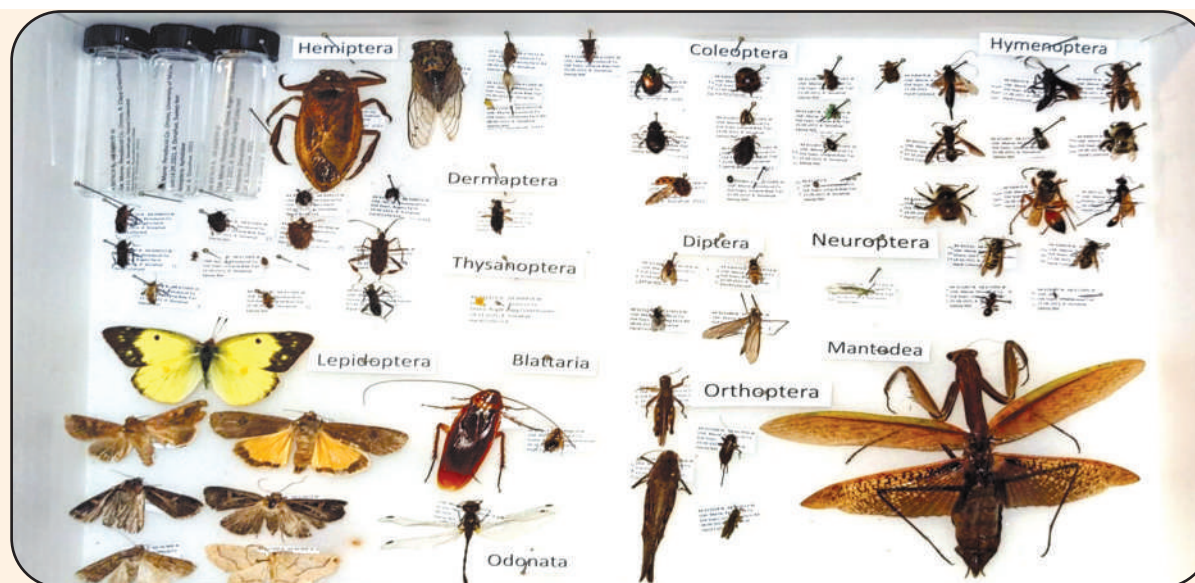
Entomology is a specialised branch of science that deals with the study of insects, vermin, scorpions, spiders and similar other species. It can be classified as a sub field of zoology, which is in turn a branch of biology. Sometimes known as insectology, entomology also deals with the study and classification of arthropods- an invertebrate animal having an exoskeleton (external skeleton), a segmented body and jointed appendages.

Entomology is an enormous field of study, which has various subdivisions within it. These may include morphology, physiology, zoological categories of genetics, taxonomy, behaviour, ecology, nutrition of insects, as well limited forays into forensics and paleontology. The study of entomology can provide interesting clues into the history of life on Earth and it can also be used to make projections about the future. The study of insects serves as the basis for developments in biological and chemical pest control, biotechnological research and development, food and product storage.

Entomologists are biological scientists who work in the animal world carrying out insect explorations. They are experts who specialize in the identification, classification, observation and conservation of insects and arthropods. Entomologists examine insects and their relationships to plants, environment, humans, animals, agricultural sites and other organisms. They are the persons responsible for the identification of various species of insects, both harmful and harmless to plants, animals and humans. Entomologists study and carry out research activities on insects and related life forms based on their life cycle, physiological factors and so on.

Eligibility

To work as an Entomologist, a candidate have to pursue post graduation, M Phil or PhD programs in Entomology. Entomology is taught as a sub specialization of agricultural sciences, veterinary sciences and forestry. Entomology courses are available only at the advanced levels. Only few insti-



tutes in India are offering B.Sc. Entomology course. Candidates who have passed 10+2 in science stream with physics, chemistry and biology (botany / zoology) can opt for any 3 year bachelors degree course in biological sciences (i.e B.Sc Biology/ Agricultural Science/ Forestry/ Zoology/ Botany/ Life Sciences/ Microbiology etc.)

After graduation, aspirants can go for 2 years Post graduate course in Entomology or its related fields. The admission will be based on entrance examination. However, obtaining an advanced degree in Entomology (i.e PhD or MPhil) is required for those seeking positions in education or advanced research. Post Graduates in entomology or equivalent qualification from recognized universities are required for Doctoral degree / Ph.D. Courses. Candidates are selected to these courses on the basis of marks obtained in the written entrance

examination.

Colleges and Institutes:

Banaras Hindu University : Department of Entomology and Agricultural Zoology, Varanasi
Institute of Agricultural Sciences ,
Varanasi (Varanasi Dist.) - 221005
Uttar Pradesh
Barrister Thakur Chhedilal College of Agriculture and Research, Bilaspur (Chh)
Station Bilaspur ,
Bilaspur (Chh) (Bilaspur Dist.) - 495001
Chhattisgarh
Punjab Agricultural University : College of Agriculture, Ludhiana
Punjab Agricultural University ,

Ludhiana (Ludhiana Dist.) - 141004
Himalayan University : Faculty of Agriculture and Horticulture, Itanagar
Chimpu, Near Arunachal Pradesh Forest Corporation, Guest House, Gohpur Tinali ,
Itanagar (Papum Pare Dist.) - 791111
Arunachal Pradesh
College of Agriculture : GB Pant University of Agriculture and Technology (GBPUAT), Pantnagar
Govind Ballabh Pant University of Agriculture and Technology ,
Pantnagar (Udhamsingh Nagar Dist.) - 263145
Uttarakhand
University of Agricultural Sciences - UAS Bangalore, Bangalore
Gandhi Krishi Vignan Kendra,
Bellary Road ,
Bangalore (Bengaluru Dist.) - 560065
Karnataka
Swami Keshwanand Rajasthan Agricultural University, Bikaner
Swami Keshwanand Rajasthan Agricultural University ,
Bikaner (Bikaner Dist.) - 334006
Rajasthan
Indian Agricultural Research Institute- Division of Entomology, New Delhi
Pusa Campus ,
New Delhi (Delhi) - 110012

If you have any ideas, poems, stories, paintings that you would like to share with us, please send it to
STATE TIMES,
AMPHALA, JAMMU, 180001
or send via email to statetimes1@gmail.com