

Talent Corner

Poem — The Emotion of a Mother

The emotion of a mother, so tender and deep,
A facade of reality, Yet its essence we keep.
Superficially real, it may seem, at first glance,
But beneath the surface, its truth does enhance.

Oh, how wondrous it is to ponder,
A tale so hard to believe,
I ponder, Crafted with care, a masterpiece divine,
Unfolding a love that knows no line.

The love, so tender and contagious,
That children know, without stages,
They take for granted, unaware,
In innocence, they do not care.

Oh, the depths of motherly emotion,
A love so profound, defying explanation.
All who experience it,
Both give and receive, But mother love,

Oh, how it's hard to conceive.
Untouchable, this love, So pure and divine,
Words fail to capture its essence, so fine.
No description can do justice, no phrase can convey

The depth of a mother's love, day by day.
Oh, the overprotective soul, Shielding child from life's true toll.

No struggles, conflicts to behold,
There is no responsibility to unfold.

Disappointment, a foreign land,
Feelings, untouched by his hand.
The real world, kept at bay, In this sheltered, guarded way.
But, oh, dear heart, let him be, For growth lies in adversity.

Let him face life's bitter strife, And learn to navigate this life.
For in struggle, strength is found,
And in conflict, wisdom is crowned.

Let him taste the bitter and the sweet,
And learn how to rise from defeat.
To embrace both joy and sorrow, unshaken.
Yet, in the realm of vulnerability,

The richness and depth of love unfold,
Worth every moment of joy, And every tear, a story to be told.
So, release your grip, let child roam,

For in the real world, So, child find his home.
Embrace the lessons that it imparts,
And watch him blossom, in his heart.

Surjit Singh Flora,
Canada.

SUDOKU

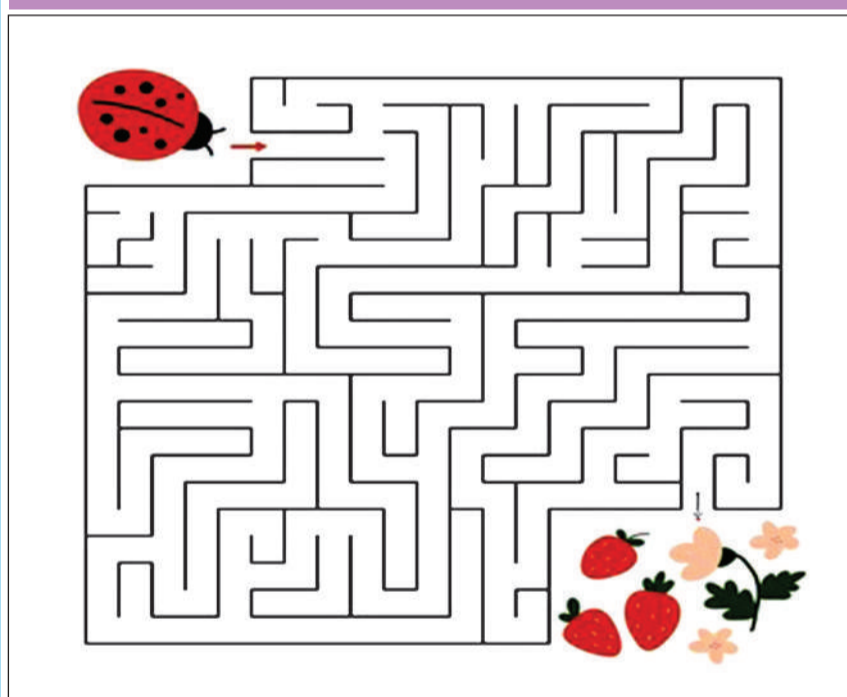
6				1	7		2
	9	1		8			
		5		9		3	
2					3	5	
	6				2		
	1		4	5			
			7	8			
	4			6			
	8	2		1	9		

SOLUTION OF LAST WEEK

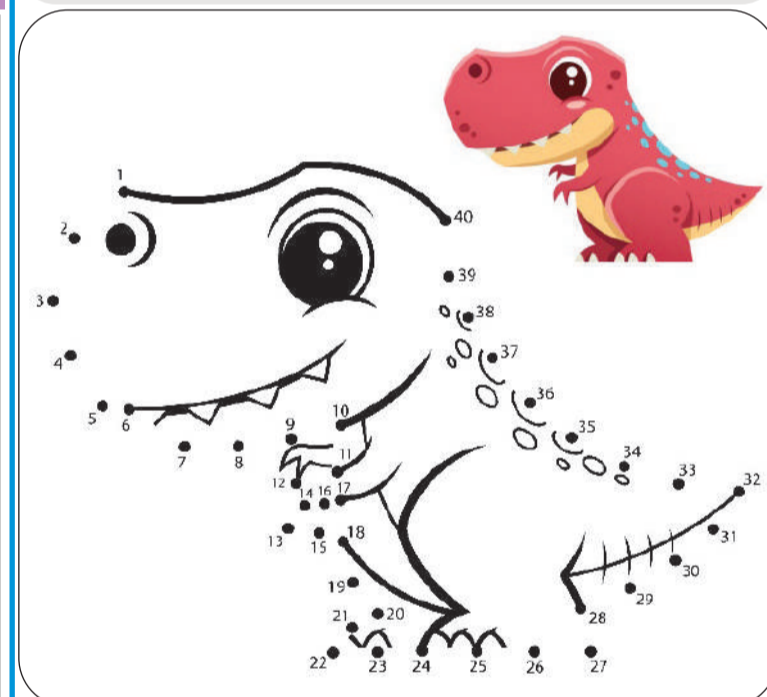
SUDOKU

2	7	9	4	5	1	6	8	3
5	3	1	8	6	2	7	9	4
4	6	8	9	3	7	1	2	5
9	4	2	6	7	3	5	1	8
3	8	7	5	1	4	9	6	2
1	5	6	2	8	9	4	3	7
8	9	5	3	4	6	2	7	1
6	1	4	7	2	8	3	5	9
7	2	3	1	9	5	8	4	6

MAZE



COMPLETE THE PICTURE



CAREER AID

Psychology

Psychology is a branch of science that deals with mental processes and behavior. It is the systematic study of human and animal behaviour, mind and thought. To pursue the career of a psychologist, one should have a genuine desire to help other human beings.

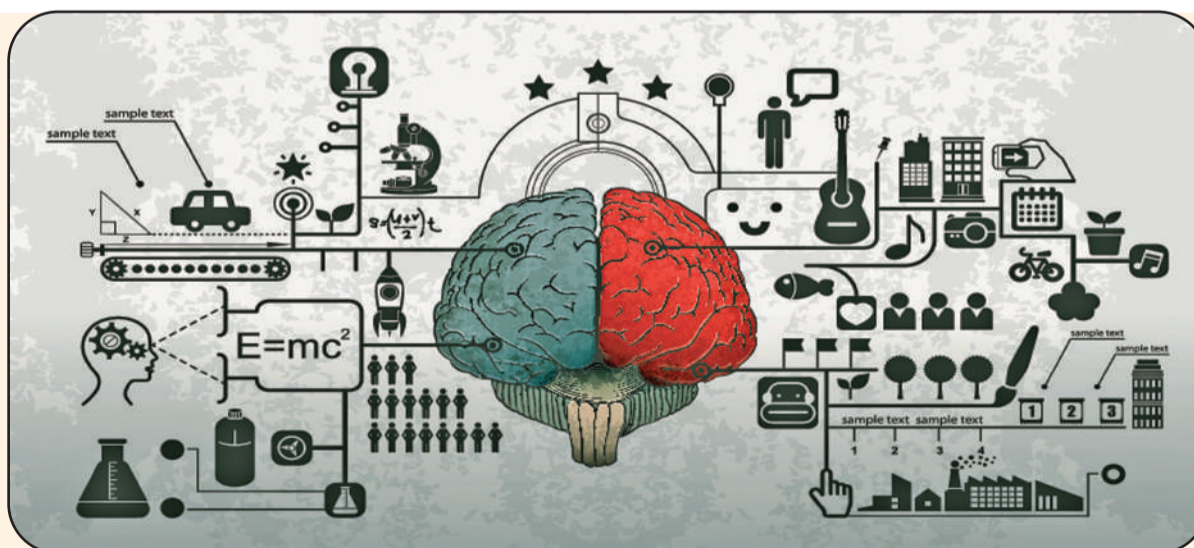
Psychology is mainly concerned with the way the mind works. Psychologists study the processes, motives, reactions, feelings and nature of the human mind. Their treatment is based on changing the behavioural patterns of the patients without medication. They do counseling and help people by bringing about changes in their thought process, thus improving their quality of life.

Psychologists need not have a medical degree. But they have to study several years to specialise in various aspects of psychology. One can pursue Psychology at the plus two level, graduate, post graduate and doctorate level. There are specialisations in many fields of psychology such as social psychology, child psychology, occupational psychology, clinical psychology, educational psychology, experimental psychology, etc.

Psychologists teach, practice and do research or work in one of the many branches of applied psychology. They apply their knowledge and techniques to a wide range of endeavors, including human services, management, education, law and sports.

Eligibility

Psychology is offered as a subject at the Plus Two or equivalent level with a combination of other social sciences and statistics. At the graduate level, one can study psychology as an Honors subject in most universities. After graduation, one can opt for an MA or MSc in Psychology, Social work or Counseling. Specialisations in the subject can be pursued at the post graduate level or at the doctoral level- M.Phil or Ph.D, after post graduation. At the master's and doctoral level, education becomes increasingly specialized.



Post graduate courses in psychology are offered only to students who have graduated with psychology. Post graduate and doctoral degrees in Psychology puts emphasis on research. If your interest is in practice, i.e. helping people with problems (counseling) you could opt for Psychology-related graduate programs such as education and social work

Colleges and Institutes:

- Quantum University, Roorkee**
Mandawar, 22 Km Milestone,
Roorkee – Dehradun Highway (NH – 73) ,
Roorkee (Haridwar Dist.) - 247167
- Uttarakhand Government College, Rhenock, East Sikkim**
Rhenock, Rungtung, PO/PS – Rhenock Bazaar ,
East Sikkim (East Sikkim Dist.) - 737133
- Salesian College Sonada Campus, Darjeeling**
Ring Tng Tea Garden, Sonada ,

- Darjeeling (Darjeeling Dist.) - 734209**
- West Bengal Government General Degree College, Hooghly Singur ,**
Hooghly (Hooghly Dist.) - 712409
- West Bengal Maharani Lakshmi Ammanni College for Women : Department of Psychology, Bangalore**
18th Cross Road,
Malleswaram ,
Bangalore (Bengaluru Dist.) - 560012
- Karnataka Vision Institute Of Applied Studies, Faridabad**
Plot No. 40, Sector-20B, Huda, Faridabad ,
Faridabad (Faridabad Dist.) - 121219
- Haryana St. Johns College, Agra**

- M.G. Road , Agra (Agra Dist.) - 282002**
Uttar Pradesh
- Avadh Girls PG College, Lucknow**
20-A, Vikramaditya Marg ,
Lucknow (Lucknow Dist.)
Uttar Pradesh
- Acharya Institute of Graduate Studies, Bangalore**
Acharya Dr. Sarvepalli Radhakrishnan Road Acharya PO ,
Bangalore (Bengaluru Dist.) - 560 107
- Karnataka Tamil Nadu Open University: School of Social Science, Anna Salai**
School of Social Science, No 577,
Saidapet , Anna Salai (Chennai Dist.) - 600 015
- Tamil Nadu Manonmaniam Sundaranar University - Department of Psychology, Tirunelveli**
Department of Psychology Manonmaniam Sundaranar University ,
Tirunelveli (Tirunelveli Dist.) - 627 012
- Tamil Nadu Government College for Women, Thycaud, Thycaud Vazhuthacaud ,**
Thycaud (Thiruvananthapuram Dist.) - 695014
- Kerala Fatima Mata College, Kollam**
Kollam , Kollam (Kollam Dist.)
Kerala

If you have any ideas, poems, stories, paintings that you would like to share with us, please send it to
STATE TIMES,
AMPHALA, JAMMU, 180001
or send via email to statetimes1@gmail.com