

Talent Corner

Poem — Father

You are behind every carefully checked step of my life,
Along with my mother who is your wife.
Without your help I was not able to work rife,
And my life would resemble cutting pebble with blunt knife.

Every step of mind is under the supervision of your eyes,
While taking decisions, you are so wise.
Following your advice ,
My performance subsequently rise.

You fulfilled every requirement of mine,
Even before it was demanded my cine.

You provided me healthy, delicious meal even before you dine,
For me you have made everything fine.
I am so glad, By God’s grace, to have such a great dad.

In your presence, no one can feel sad,
And what you want from me is just a tad.
Now it’s time to make you feel proud,
That’s all my inner voice saying so loud.
And also in a peaceful, royal place away from huge crowd,
After all, making a confidently, relaxed rout.

Sahaj Sabharwal.

Poem — Endless Pain

Look into my eyes, You will get surprised,
Deep inside an Ocean of tears,
Thousand ears but no body hears.

A saga full of agony and pain,
Everything lost nothing has gained,
You didn't know about my past,
Surrounded by many but still so lost.

A feeling that I cannot describe,
Life has been a roller coaster drive,
It is better to enjoy the ride,

Nothing in my hand everything I tried.
After storms like a broken tree,

Life has done no good to me,
Miles to go but I feel exhaust,
O Lord, Give me strength do it fast,
I know all my prayers will not go in vain,
One day I will overcome this endless pain.
This Endless pain....This Endless pain.

Tarandeep Singh
Srihpura, Miran Sahib.

SUDOKU

6	5	2	9	7	4	1	8	3
4	1	8	3	6	5	9	2	7
3	9	7	1	8	2	5	4	6
9	2	6	5	4	1	7	3	8
5	7	4	8	2	3	6	1	9
1	8	3	6	9	7	4	5	2
2	6	5	7	1	8	3	9	4
7	4	1	2	3	9	8	6	5
8	3	9	4	5	6	2	7	1

SOLUTION OF LAST WEEK SUDOKU

1	4	5	2					
6				4	8			
	7	2	1					9
				4		2	7	
9						7	5	
2	8	5	6				9	
	7							6

MAZE



COMPLETE THE PICTURE



CAREER AID

Instrumentation Engineering

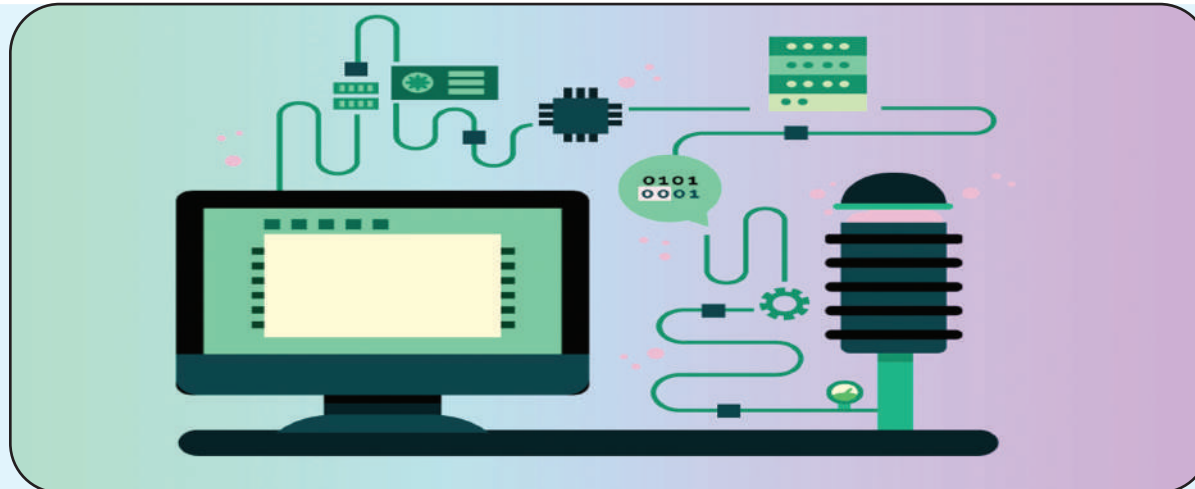
Instrumentation engineering is specialized branch of Electrical and Electronic engineering. Instrumentation engineering focuses on the principle and operation of measuring instruments, which are used in design and configuration of automated systems.

The professionals who are involved in these activities are known as instrumentation engineers. Instrumentation engineers usually have degrees in instrumentation engineering, chemical engineering, electrical engineering, or mechanical engineering and sometimes in the newer fields of Control engineering, control systems engineering etc.

Instrumentation engineers work in industries with automated processes, such as chemical or manufacturing plants with the goal of improving system productivity, reliability and stability. They help in the designing, construction and maintenance of instruments and entire instrumentation systems of an industrial undertaking. An instrumentation engineer decides the type of instruments needed for ensuring better quality and efficiency of the end product.

Educational

To be an instrumentation engineer one need to have a graduate degree (B.E /B.Tech) or at least a diploma in engineering. One can also go for Diploma program after completion of his/her class 10th. Diploma holders can get direct admission into second year of engineering in the same stream in which they have completed their diploma. To be eligible for bachelor's degree course i.e. B.E or B.B.Tech, one must clear 12th std. board exam with at least 50% marks(60% for IITs) in the science stream with Physics, Chemistry and Maths as compulsory subjects. Those with B.E/B.Tech can further advance their studies by doing post graduate course M.E/M.Tech. Individuals with interests in research areas can pursue PhD



after his/her post graduation studies for carrying out research works. One can do PhD in the following areas: Digital Signal processing, Monitor Control, Speech Processing, Sensor Network, Intelligent Controls. The degree and postgraduate degree courses are offered by IITs, NITs, private and government engineering colleges.

Selection :

Selection to the graduate courses (B.E / B.Tech) is based on merit i.e the marks secured in the final exams of 10+2 and through entrance exams. Entrance to the IIT's is through 'JEE' (Joint Entrance Exam) and for other institutions through their own separate entrance exams and other state level and national level exams. Apart from the IIT's, some other famous institutes also recognize JEE scores for selection. The national level exam AIEEE is also conducted for admissions in the NITs in India and many other prestigious colleges. Selection to the postgraduate courses (M.E / M.Tech) in different universities is through an 'All India

Combined Entrance exam' conducted by JNU, New Delhi, and to IIT's is through 'GATE'.

Colleges and Institutes:

Sri Ramakrishna Engineering College, Coimbatore
Vattamalaipalayam, N.G.G.O. Colony (Post) ,
Coimbatore (Coimbatore Dist.) - 641022
Tamil Nadu

Netaji Subhas Institute of Technology (NSIT), New Delhi
Azad Hing Fauj Marg, Sector - 3,
Dwarka (Pappankalan) ,
New Delhi (Delhi) - 110078

Sri Sairam Engineering College, West Tambaram
Sai Leo Nagar, West Tambaram ,
West Tambaram (Chennai Dist.) - 600 044
Tamil Nadu

Atmiya Institute of Technology and Science, Rajkot
Yogidham Gurukul, Kalawad Road,
Rajkot. , Rajkot (Rajkot Dist.) - 360005

Gujarat
Jayamatha Engineering College, Kanyakumari
Aralvaimozhi ,
Kanyakumari (Kanyakumari Dist.) - 629301
Tamil Nadu

Thapar University, Patiala
P.O Box 32 , Patiala (Patiala Dist.) - 147004
Punjab

RVS (Ratnavel Subrahmaniam) College of Engineering and Technology, Dindigul
R.V.S Nagar, Karur Road,
N.Paraipatti (PO) ,
Dindigul (Dindigul Dist.) - 624004
Tamil Nadu

Dharmsinh Desai University, Nadiad
College Road, Post Box No. 35 ,
Nadiad (Kheda Dist.) - 387001
Gujarat

LD College of Engineering, Ahmedabad
Navrangpura ,
Ahmedabad (Ahmedabad Dist.) - 380015
Gujarat

Government College of Engineering, Amravati
Kathora Naka , Amravati (Amravati Dist.) - 444604
Maharashtra

If you have any ideas, poems, stories,
paintings that you would like to share with us,
please send it to

STATE TIMES

AMPHALA, JAMMU, 180001

or send via email to statetimes1@gmail.com