

Talent Corner

Prayer for World : COVID-19

Oh- Almighty, we have lost our ways,  
Forgive us and seeking for your grace.  
You are our treasure,  
we have nothing to pay,  
you are the guide of this world,  
please make this healthy and safe.

In this time whole the world in pain and sorrow,  
Everyone is seeking the life should be better tomorrow.  
We are blind and keep watching us where we go,

Help this world and make it safe, in times when we don't know.  
We are your follower don't lead us into temptation,  
But give us the way to be safe from Corona.  
Oh God nobody wants this sort of transformation,

We want this world without panic and it's our expectation.  
Oh- Almighty we feel like we have got struck,  
Nothing motivates us,  
we have got struck in hut  
In every heartbeat and every single breath,  
You are only an expression of praise-  
Forgive our mistakes oh - almighty and bless us with this grace.

Everyone finds healing and want to be strong.  
You are our last hope and nothing else we want.

We rest in You, depend on You and trust You.

Rakesh Kumar,  
Rajgarh, Ramban.

Rivulet

O rivulet! the source of water pure  
Thy home is some place obscure  
In the bosom of a mountain  
Or at some beautiful fountain.

Thou run at a great speed  
Like a young healthy steed  
During rain thou flow full  
As if you were a berserk bull

Though thy journey is not long

Thy sound is a beautiful song  
You mix up with the stream  
And never afterward do seem.

I like you for whatever you are  
Though you never run so far  
You have a grace of your own  
I wish with you I had also flown.

Sometimes you do tease the beauties  
While they are on their way to duties

To cross you, they take off the shoes  
Many a time some other way choose.

I salute you for breaking the rocks  
Making the travellers remove the socks  
In monsoons your waves do high rise  
And you run with a thunderous noise.

Ashok Sharma,  
Housing Colony, Udhampur.

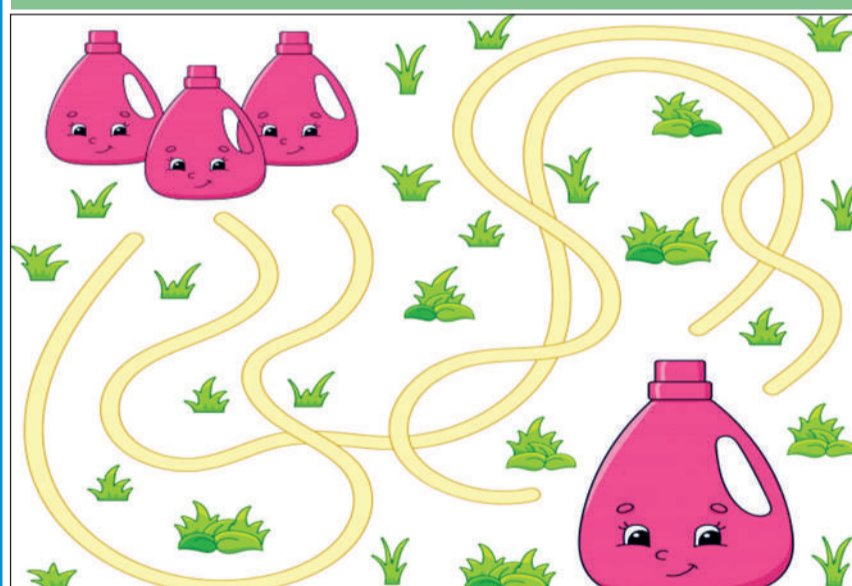
SUDOKU

		5		4			6	
4			1					
1				3	6			
		2						
	1					4		9
						8	5	
	2	3				9	8	1
		6			3	7		4
			7	9		5		

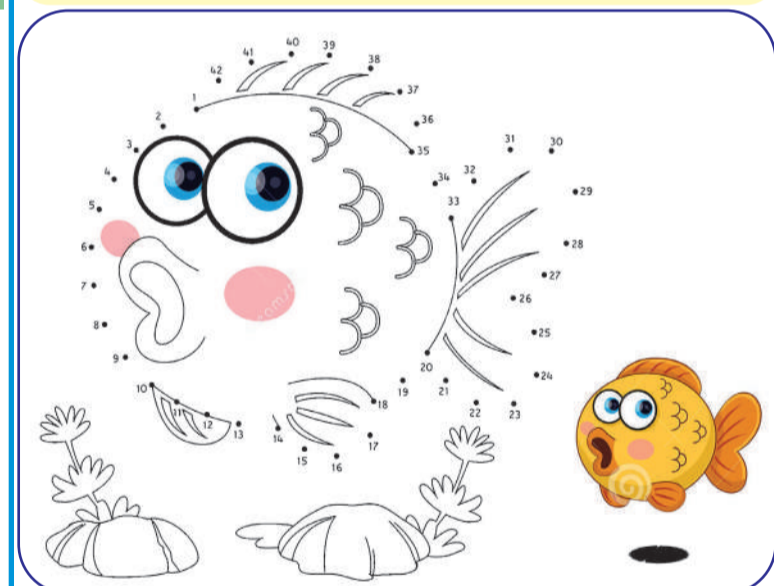
**SOLUTION OF LAST WEEK SUDOKU**

5	9	6	7	8	3	2	1	4
3	1	7	4	2	6	9	5	8
4	8	2	1	5	9	7	3	6
6	2	3	8	9	4	1	7	5
7	4	9	3	1	5	8	6	2
8	5	1	6	7	2	4	9	3
9	7	4	5	3	8	6	2	1
1	6	5	2	4	7	3	8	9
2	3	8	9	6	1	5	4	7

MAZE



COMPLETE THE PICTURE



CAREER AID

Speech Pathology and Audiology

Speech pathology and Audiology are allied health careers where the professionals are qualified by special training, education, skills and experience to provide health care service and treatment. While the field is an allied health field, the practitioners are not physicians but rather known specifically as speech pathologists and audiologists. Speech language pathology and audiology are distinct disciplines, but are so interrelated that to be fully competent in either, one should be familiar with both. Both deal with speech, language and hearing impairments that disrupt the ability of the sufferer to communicate and interact in various social situations. Speech language pathologists and audiologists are concerned with the prevention, identification and rehabilitation of children and adults with communication disorders and hearing impairment. Audiologists examine people of all ages and identify symptoms of hearing loss, auditory, balance and related sensory and neural problems. They use specialized equipments like audiometers, computers and other testing devices to evaluate and estimate the impact of auditory and balance problems on the client's daily life. Audiologists then use the results from these tests to prepare a diagnosis and design a course of treatment by using remedial measures and rehabilitation strategies depending on what the situation demands. Speech therapists or speech language pathologists work with people who have speech disorders like inability to produce sounds, speech rhythm and fluency problems and also people who have swallowing disorders due to problems like cleft palate or other medical conditions which may be congenital, developmental or acquired. Speech language



pathologists' work involves assessment, diagnosis, treatment and prevention of speech-related disorders, designing and employment of augmentative and alternative communication methods. Sometimes they also need to counsel and advise patients and their family to deal with speech disorders and situations arising because of them and alleviate stress and misunderstanding. **Eligibility** To practice audiology, professionals need to have either Bachelors/Masters degree in Audiology and be registered with Indian Speech and Hearing Association (ISHA) or Rehabilitation Council of India (RCI). For undergraduate courses the applicants should have passed the pre-university course or 10+2 from a recognised institution with science subjects - Biology, Physics,

Chemistry, Mathematics. The duration for an undergraduate course is 3 to 4 years. The various universities may grant admissions either on the basis of marks of the 10+2 course or they may conduct specific entrance tests to gauge the merit and aptitude of the aspirants. **Colleges and Institutions:** Sri Ramachandra College of Physiotherapy, Chennai Constituent College of Sri Ramachandra University, Porur, Chennai (Chennai Dist.) - 600016 Tamil Nadu Topiwala National (TN) Medical College and BYL Nair Charitable Hospital, Mumbai Dr.A.L.Nair Road, Mumbai (Mumbai Dist.) - 400008

- Maharashtra Ali Yavar Jung National Institute for the Hearing Handicapped (AYJNIIHH), Mumbai Kishen Chand Marg, Bandra Reclamation (W), Mumbai (Mumbai Dist.) - 400050
- Maharashtra Indian Institute of Health Education and Research, Patna Health Institute Road, Near Central Jail, Beur, Patna (Patna Dist.) - 800002
- Bihar Institute of Health Sciences, Mangalore A.R.Shetty Circle, Mangalore (Dakshin Kannada Dist.) - 575057
- Karnataka All India Institute of Medical Sciences (AIIMS), New Delhi Safdarjung Enclave, Aurobindo Marg, Ansari Nagar, New Delhi (Delhi) - 110029
- Delhi All India Institute of Speech and Hearing, Mysore Manasagangothri, Mysore (Mysore Dist.) - 570006
- Karnataka Post Graduate Institute of Medical Education and Research : College of Nursing, Chandigarh Sector 12, Chandigarh (Chandigarh) - 160012 Chandigarh

If you have any ideas, poems, stories, paintings that you would like to share with us, please send it to the STATE TIMES, AMPHALA, JAMMU, 180001 or send via email to magazine@statetimes.in, statetimes1@gmail.com